

# Atlantic Wood*WORKS!*

December 2 & 3, 2014

Wood Design in Mid-rise Buildings  
- Why we use wood

Syd Dumaresq

SP Dumaresq Architect Ltd

Halifax, NS

# Why I love wood



PLAN & ADDITIONS TO  
RESIDENCE OF  
HON. F. W. BORDY  
CANNING N  
DESIGN



WEST SIDE ELEVATION



PLAN OF HOUSE

SOUTH SIDE ELEVATION

HARRIS & PHELPS  
ARCHITECTS







**INDIAN RIVER**  
AIRSCAPES © B. GARNETT



**SP DUMARESQ  
ARCHITECT LTD**

# 1887



Market Square and South Market Slip in Flames



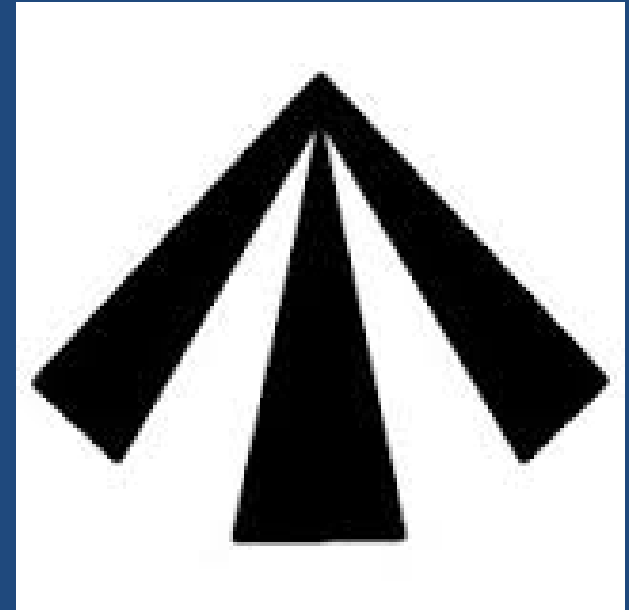
NBM / MINB





**SP DUMARESQ  
ARCHITECT LTD**

# Kings Broad Arrow







**SP DUMARESQ  
ARCHITECT LTD**

en coulisse









# Notched posts

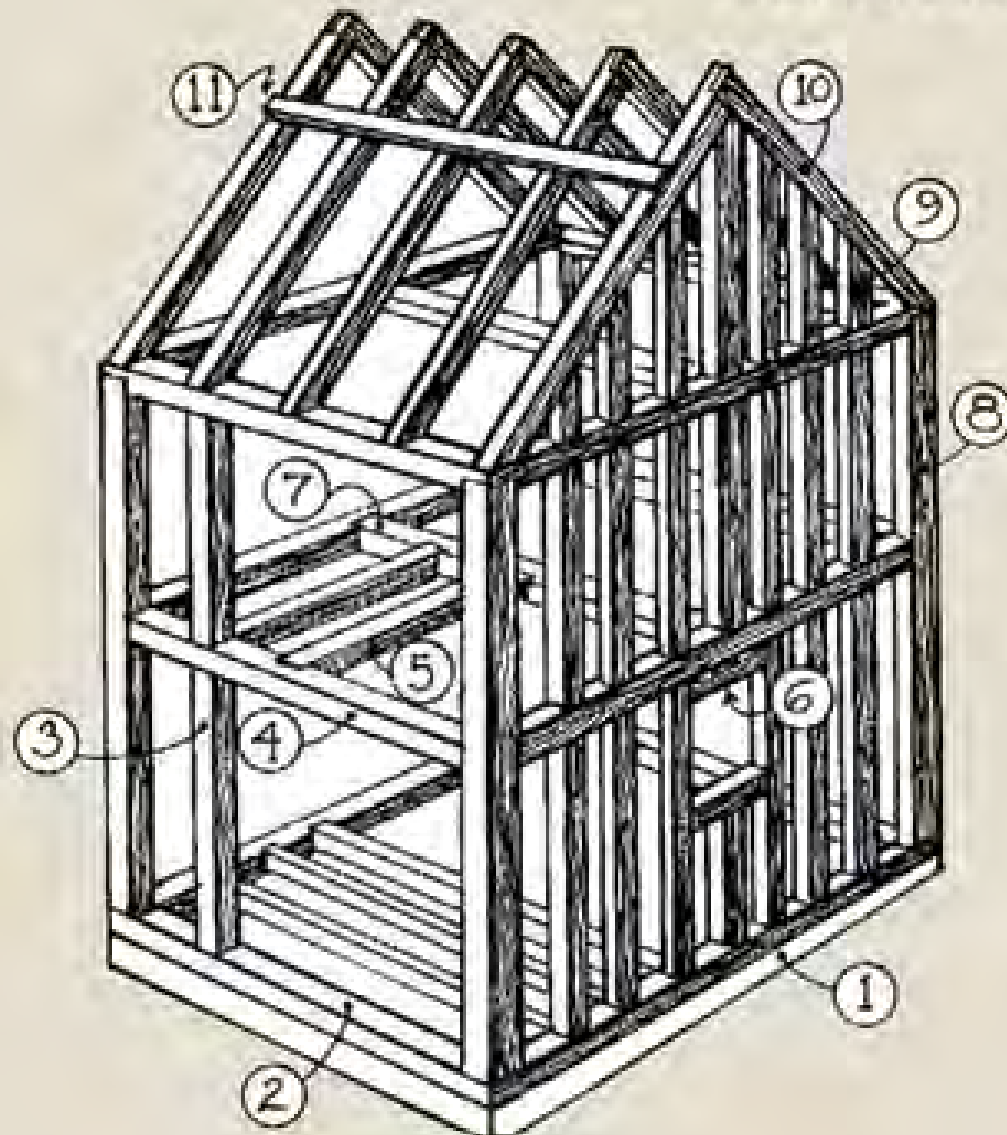


# Interior finish



# Post and Beam Framing

1620 to 1830



1. Foundation
2. Sill
3. Stud
4. Girt (Girder)
5. Joist
6. Window Header
7. Summer Beam
8. Post
9. Gable Stud
10. Rafter
11. Roof Board



# Chester United Baptist Church











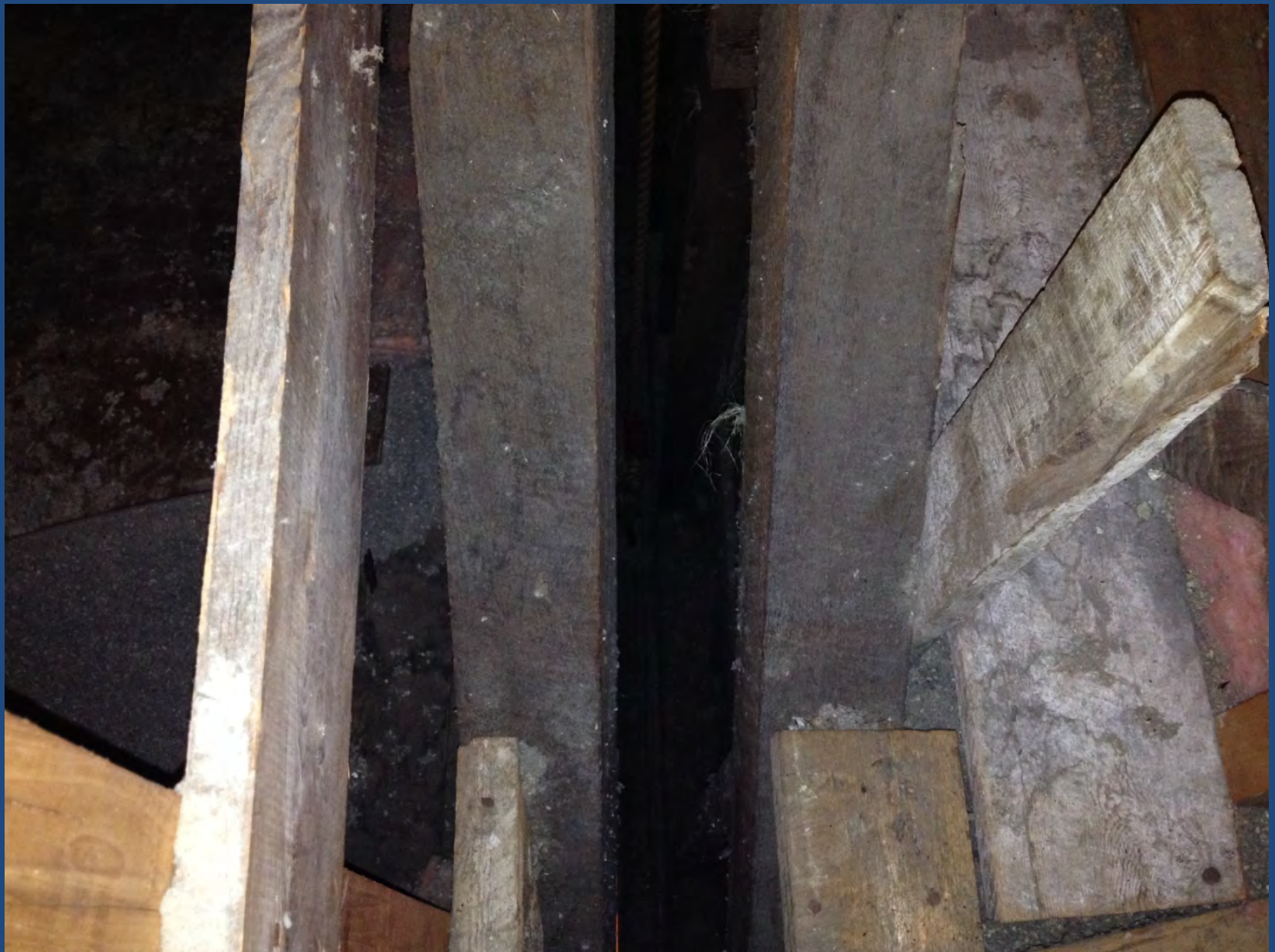






**SP DUMARESQ  
ARCHITECT LTD**

















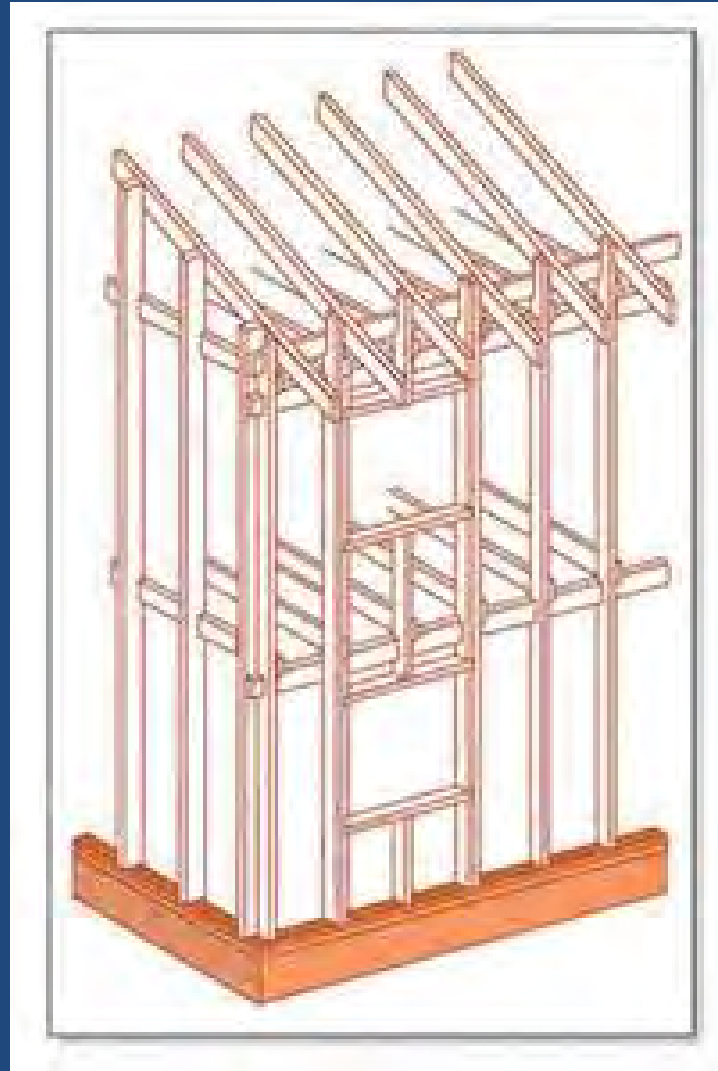








# Balloon framing 1830-1930



# Platform Framing 1900 on



**SP DUMARESQ  
ARCHITECT LTD**



# Platform Framing 1900 on



# TJI's, LVL's, CLT's etc.



**SP DUMARESQ  
ARCHITECT LTD**

# High Rise



**SP DUMARESQ  
ARCHITECT LTD**



# Why do I love wood?







**SP DUMARESQ  
ARCHITECT LTD**





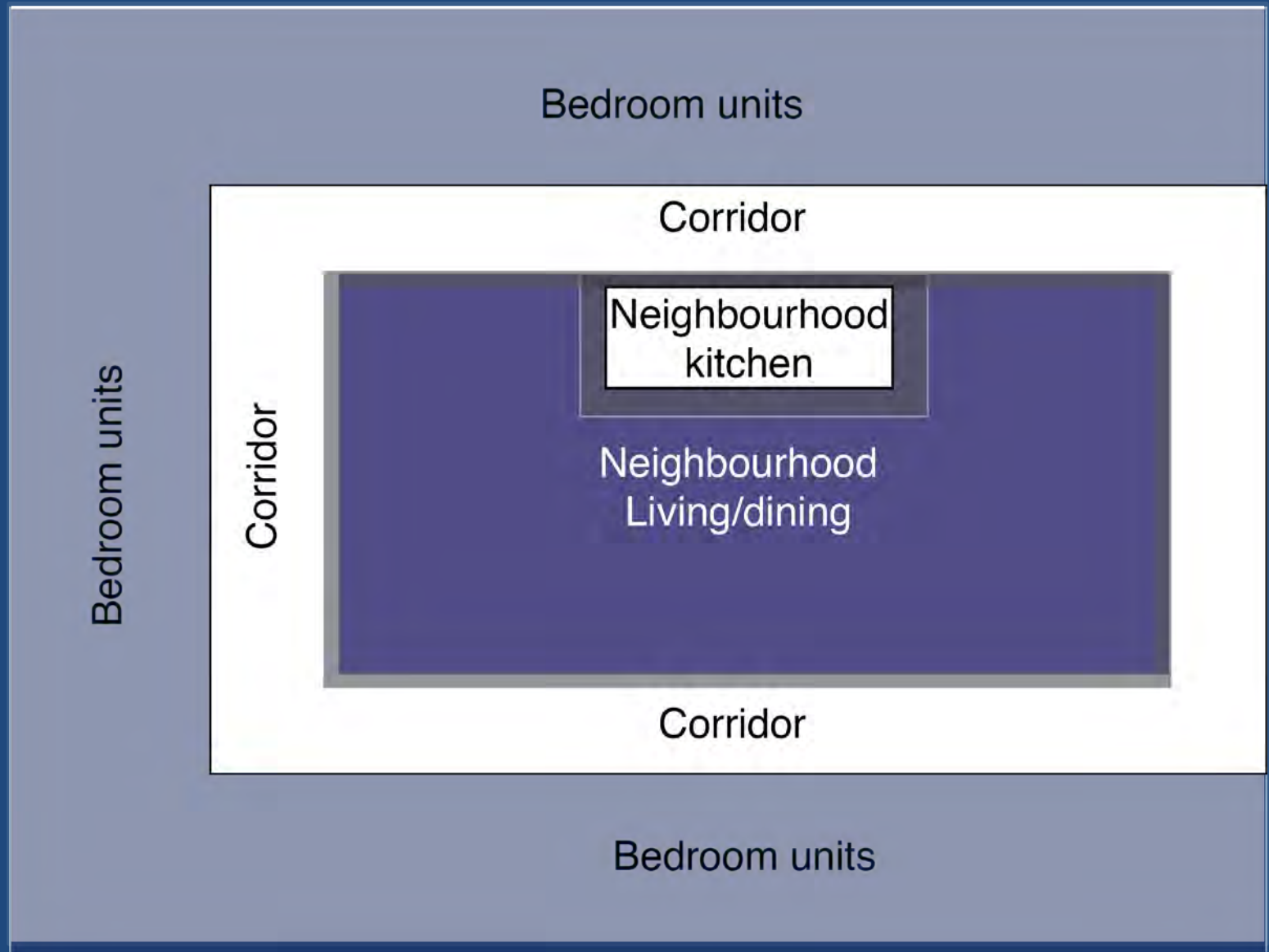




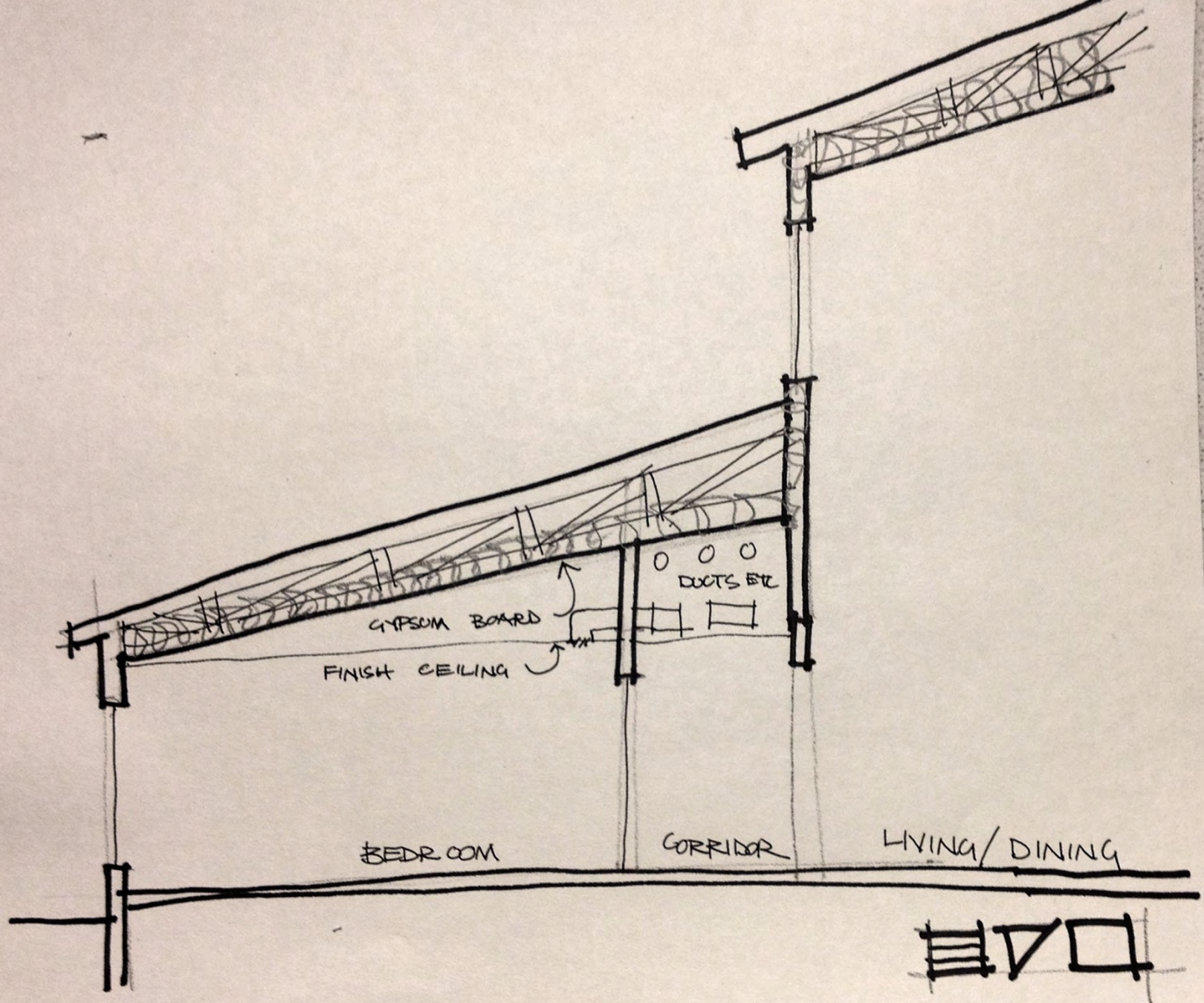
**IMARESQ**  
**TECT LTD**

# Living well in a place you can call home























**SP DUMARESQ  
ARCHITECT LTD**



# Villa St Joseph du Lac



**SP DUMARESQ  
ARCHITECT LTD**





**SP DUMARESQ  
ARCHITECT LTD**







# Villa St Joseph du Lac



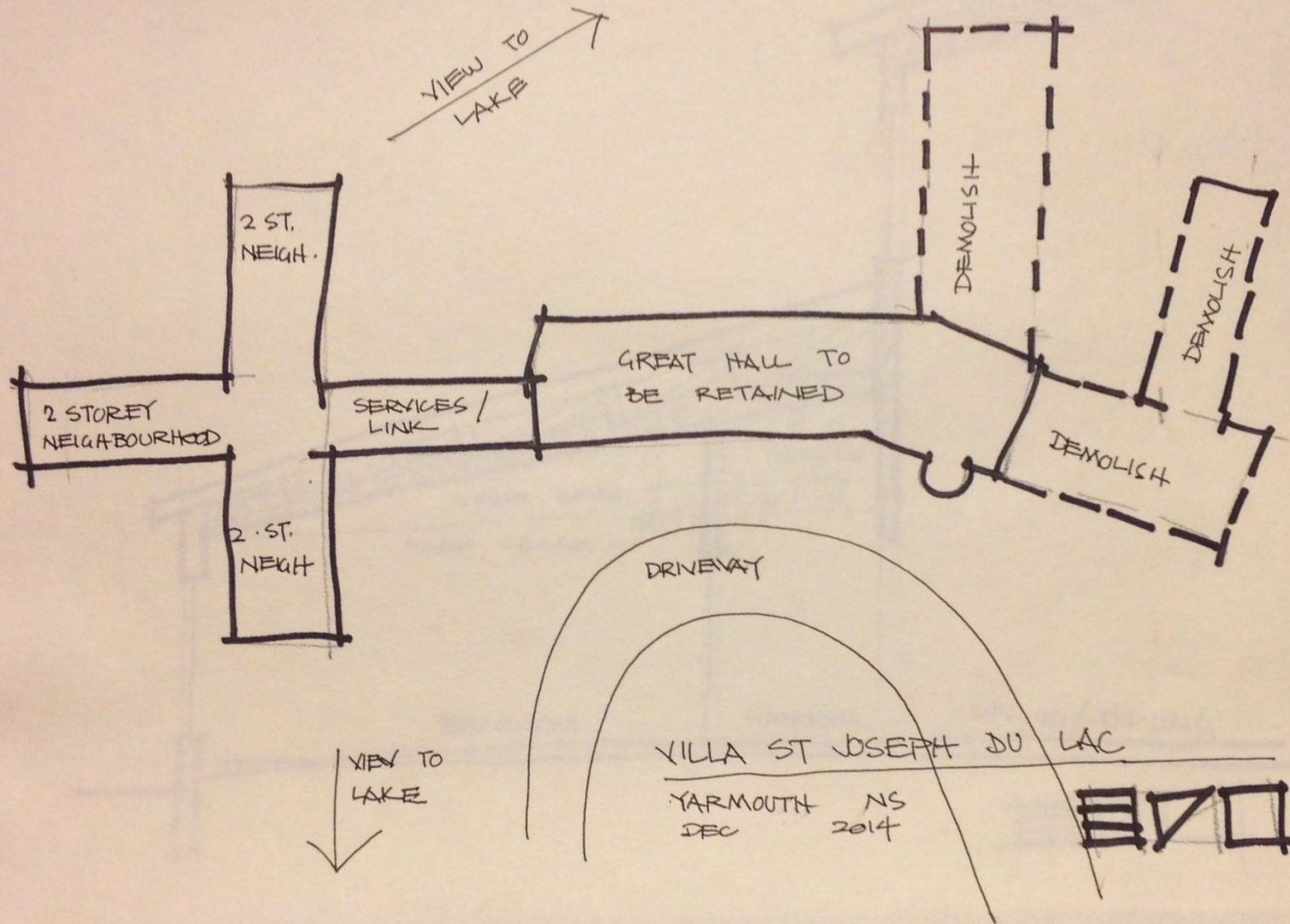
**SP DUMARESQ  
ARCHITECT LTD**











# Why wood



# Fast and economical



**SP DUMARESQ  
ARCHITECT LTD**

# Renewable



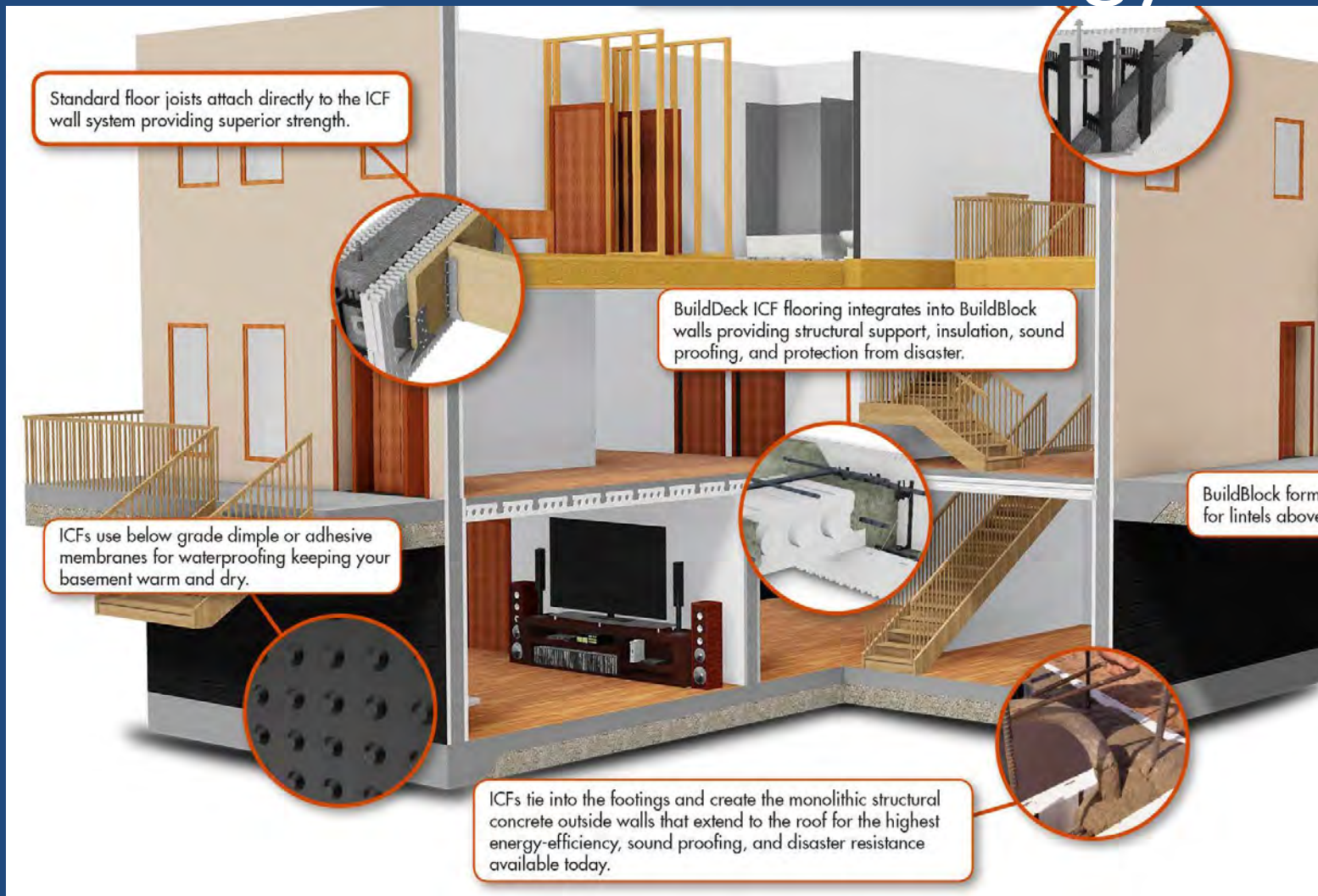
**SP DUMARESQ  
ARCHITECT LTD**



# Local

- Locally grown & harvested
- Locally milled
- Locally retailed
- Constructed by locally trained & located carpenters
- Supports local economy & rural sustainability
- Local = reduced transportation costs

# Low embodied energy





# Little waste on site

- Cut ends can be used in blocking, etc.

# Longevity





# Suitability for re-use, salvaged or adapted













# Flexible











**SP DUMARESQ  
ARCHITECT LTD**





**SP DUMARESQ  
ARCHITECT LTD**





**SP DUMARESQ  
ARCHITECT LTD**









# Can be pre-fabricated off site



**SP DUMARESQ  
ARCHITECT LTD**



















**SP BONARES &  
ARCHITECT LTD**

# Easy to adapt to local context













# Flexible –easy to achieve design objectives



**SP DUMARESQ  
ARCHITECT LTD**









**DUMARESQ**  
**ARCHITECT LTD**





**UMARESQ  
ITECT LTD**













ARCHITECT LTD















# Local context



**SP DUMARESQ  
ARCHITECT LTD**

# Local context



**SP DUMARESQ  
ARCHITECT LTD**



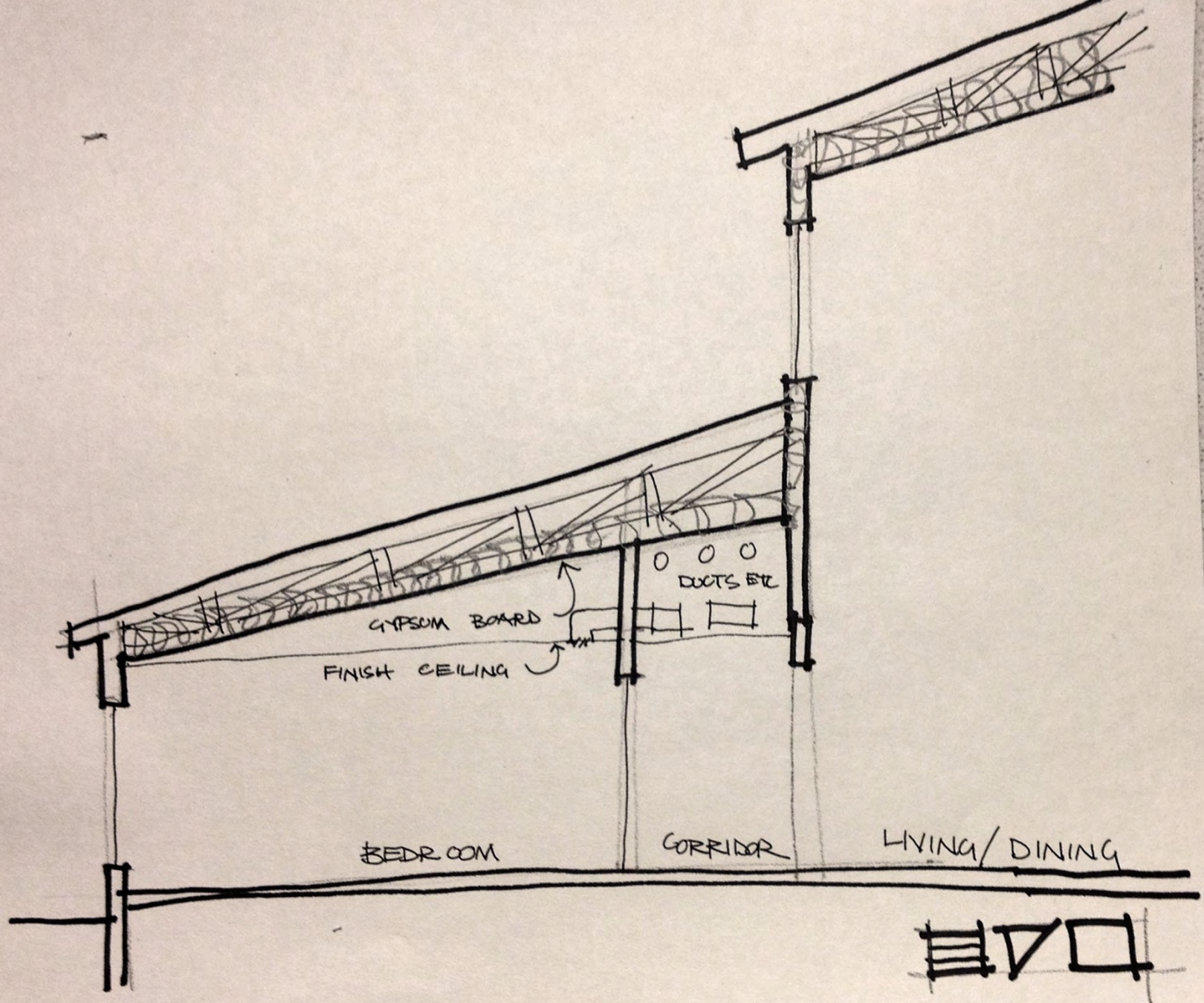


# Scissors trusses to achieve higher ceilings in corridors



**SP DUMARESQ  
ARCHITECT LTD**





# Drywall u/s of trusses





# In floor heat



**SP DUMARESQ  
ARCHITECT LTD**





# Fill TJI's with noncombustible insulation

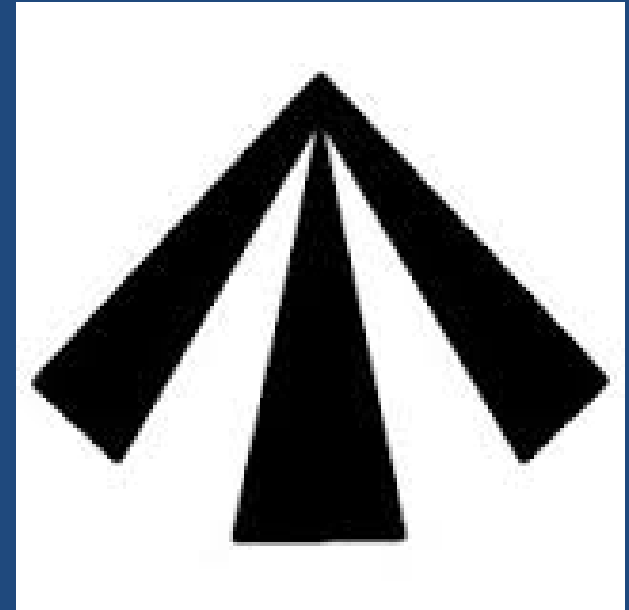


# Alternate compliance – RJ Bartlett





# Kings Broad Arrow







# Toilet paper



# Burning forests to generate electricity



**SP DUMARESQ  
ARCHITECT LTD**



# Economy & Environment are one

- We need a healthy,  
diversified, local forestry  
industry

# Rural sustainability



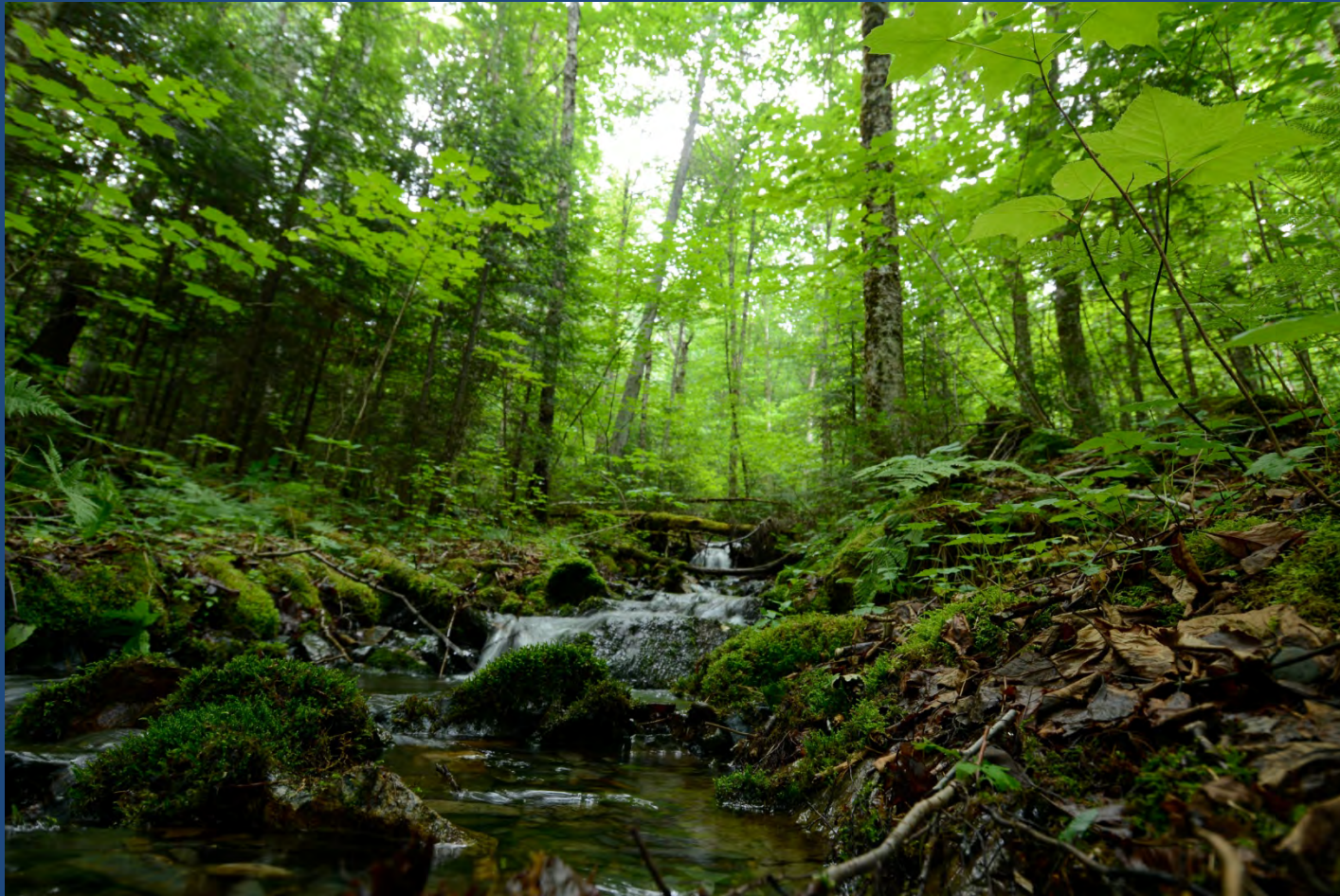


# Trees consume CO<sub>2</sub>



**SP DUMARESQ**  
**ARCHITECT LTD**

A healthy forest filters our drinking water.





# More than just a forest –It's habitat





# More life in a dead tree than a live one



**SP DUMARESQ  
ARCHITECT LTD**



# Being in a forest just feels great



# What can I do ???



# Understand & specify local wood species

- Spruce, pine, fir – structural and fin. carpentry
- Eastern white cedar – rot resistant
- Hemlock – rot resistant
- Tamarack – rot resistant
- Poplar – plywood & finish material
- Yellow & white birch, red oak, red sugar maple –finish carpentry, flooring
- Locust - strength

# Investigate Third Party Certifications





# Understand local harvesting practices







**SP DUMARESQ  
ARCHITECT LTD**



# Modest clear cut



# Campaign for better forestry practices

- Larger riparian setbacks (from watercourses)
- No whole tree harvesting
- No power generation from wood
- Leave more standing forest areas for wildlife and clean water
- More community forests



# Medway Community Forest –Mersey Tobiatic Research Institute



**SP DUMARESQ  
ARCHITECT LTD**

# Thanks for listening!!



**SP DUMARESQ  
ARCHITECT LTD**